



G3 CONNECTION

CONNECTING G3 AND CANADIAN FARMERS

CEO'S MESSAGE



As we near the end of 2018 we can reflect on a year of progress and accomplishment.

Our G3 network continues to grow, with the addition this past summer of two new elevators in Saskatchewan. More are under construction,

including our first facilities in Alberta.

On the West Coast, our next-generation grain export terminal is truly taking shape and remains on track to open in 2020.

All of these modern facilities will speed up the flow of grain and bring our vision – a

smarter path from farmers' fields to global markets – closer to reality.

Most of all, we've grown our relationships with our customers. More farmers than ever are seeing the value in selling their grain to us and trusting us to get it to market as quickly and efficiently as possible. We will continue to work hard to earn their business with excellent service at all of our facilities.

It's been a pleasure to meet many of our customers and partners this year, and I look forward to seeing more in 2019.

From all of us at G3, best wishes for a safe, happy and successful New Year.

Don Chapman, CEO G3

TWO MORE ALBERTA ELEVATORS ON THE WAY

G3s footprint in Alberta is getting bigger.

The company announced this fall two more elevators to be built in the province – at Carmangay in the south, and Morinville in central Alberta.

Both facilities will feature the same high efficiency technology as our other new elevators on the Prairies, which can empty a Super-B truck in less than five minutes and load 134-car trains in a matter of hours on the loop track. They are designed to save farmers' time and keep the grain moving to market.

"These new facilities will be a great addition to those communities and I look forward to giving area farmers the opportunity to

experience our industry-leading speed and efficiency and customer service," says G3 CEO Don Chapman.

G3 Carmangay will be located southwest of Carmangay on the east side of Highway #23 on CP Rail; G3 Morinville will be 2.4 km west of Morinville on the north side of Highway #642 on CN Rail. Both will have a capacity of 42,000 tonnes.

The new elevators are expected to be complete in 2020, when G3's new grain export terminal in Vancouver also becomes operational.

These projects are just the latest in the expansion of G3's network. Construction is already underway on previously-announced elevators in Wetaskiwin, Alberta and Maidstone, Saskatchewan. G3 recently celebrated the grand openings of new elevators near Melville and Saskatoon, Saskatchewan.

DECEMBER 2018 IN THIS ISSUE

- CEO'S MESSAGE
- TWO MORE ALBERTA ELEVATORS ON THE WAY
- G3 TERMINAL VANCOUVER CONSTRUCTION UPDATE
- NEW WHEELS ON THE LOOP TRACK AT G3
- STAFF SPOTLIGHT
- SHOW OF SUPPORT FOR BREAST CANCER
- STAYING SAFE ON THE FARM IN THE WINTER
- G3 PROVIDES GRAIN RESCUE GEAR TO SASKATCHEWAN FIRE DEPARTMENTS
- G3'ERS RIDE TO RAISE FUNDS FOR STARS
- UPDATE: G3'ER RULES THE BOXING RING



G3 TERMINAL VANCOUVER CONSTRUCTION UPDATE

G3 Terminal Vancouver is fitting a lot of modern engineering onto its 58-acre site in North Vancouver.

Three full 134-car trains will be able roll in and unload their grain under continuous motion, thanks to the loop track: 11 kilometres of rail line that will circle the site.

Grain will move around on a system of conveyors that criss-cross the terminal: so many that if they were all rolled out in one line they'd be as long as 40 soccer fields!

Construction is progressing steadily. At the end of October:

- Marine Piling is 95% completed
- Concrete work is 95% completed
- Steel work is almost 60% completed

The state-of-the-art grain export terminal is on track to open in 2020.



NEW WHEELS ON THE LOOP TRACK AT G3

The next generation of grain train rolled onto the tracks at a G3 elevator in Saskatchewan.

Canadian Pacific's new High Efficiency Product (HEP) train made its debut at G3 Pasqua, near Moose Jaw, SK in early December. The train features brand new hopper cars that can carry more grain and are more compact than their predecessors.

The massive new 8,500' train was quickly loaded with grain on G3 Pasqua's loop track.

"A state-of-the-art loop track terminal like this is the perfect backdrop for launching our first HEP train and bringing in a new, more efficient era of moving Canada's grain to market," said Joan Hardy, CP's Vice-President Sales and Marketing – Grain and Fertilizers.

G3's loop track facilities allow trains to remain together and under their own power while loading, which saves significant time and keeps trains moving.

"CP's new high-capacity hopper cars add an important link in the grain supply chain," said G3 CEO Don Chapman. "Combined with fast, efficient loading on G3 loop track systems, these trains will accelerate the flow of grain to market, to the benefit of all our customers. G3 is proud to work in close collaboration with CP."

Over the next four years, CP says it plans to purchase a total of 5,900 new hopper cars.



From left to right: Murray Hamilton, CP Assistant Vice-President Sales and Marketing, Grain and Biofuels, Trent Brister, General Manager G3 Terminal - Pasqua, Hon. Lori Carr, Saskatchewan Minister of Highways and Infrastructure, Joan Hardy, CP Vice-President Sales and Marketing, Grain and Fertilizers, Mark Dyck, Senior Director Logistics, G3, Jason Hanstock, Senior Regional Manager, G3

STAFF SPOTLIGHT

Laura Langford

Trade Coordinator



G3's Winnipeg head office is a giving place – thanks in large part to Laura Langford.

The trade coordinator has been in the logistics field for nearly 20 years, overseeing various details of the movements of trains and vessels. But she's also taken on the unofficial role of coordinator for a number of head office charity drives that have raised thousands of dollars.

Laura runs 50/50 draws throughout the year that support charities including the Children's Hospital Foundation, and helps sell flowers to raise funds for the Cancer Society and Lung Association. But it's around Christmas that her operation kicks in to high gear.

"It's just fun, it's fun see how people react to it and everybody here is very giving and I think they look forward to it every year. It kind of brings the place to life," she says.

Laura's Yuletide 50/50 draws and silent auction help raise money for the Christmas Cheer Board, which distributes holiday hampers to families in need. Last year G3 Winnipeg raised about \$1000 for the Cheer Board, plus food and toys donated by G3 staff.

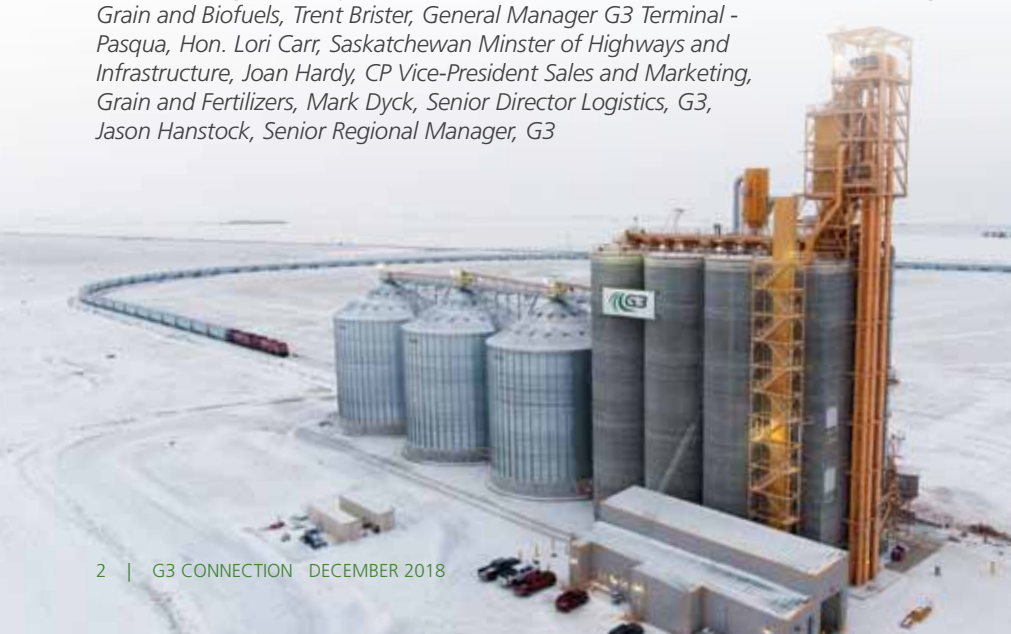
"It's as hard when you go because you're seeing the people pick up the hampers and how tough some people have it. But then on the other side when you're walking in with a whole bunch of stuff to give, it just kind of makes you feel really good that you know you're helping out."

Laura also gathers donated clothing for Siloam Mission, a local homeless shelter.

"I started in October and everybody's already asking what they can give for the Siloam Mission or the Christmas Board food-wise. I think it just makes people happy to see something like that happening in the workplace."

Laura's not alone. She has colleagues that organize events like a fundraising breakfast, and a fun run to raise money for the Salvation Army. It adds up to a lot of goodwill for G3.

"It's good for everybody here and it's getting our name back out into the community so you know the Cheer Board is recognizing G3 and Siloam Mission is doing also, they know when it comes who it's coming from and they're very happy and they remember. So it's building a relationship in the community too."





SHOW OF SUPPORT FOR BREAST CANCER

G3 Quebec was lit up pink for the whole month of October, in a colourful show of support for families affected by breast cancer. October is breast cancer awareness month, an annual campaign to increase awareness of the disease which is the second leading cause of death from cancer in Canadian women. Breast cancer mostly occurs in women between the ages of 50 and 69, and early detection is considered key to successful treatment; for more information visit www.cancer.ca.

G3 Quebec is a major grain export terminal that overlooks the historic old city of Quebec. It has a capacity of 224,000 metric tonnes and loads vessels to export grain around the world.

STAYING SAFE ON THE FARM IN THE WINTER

As Canadians, we pride ourselves on our ability to conquer winter and the challenges it presents. It's easy to become complacent and lose sight of the dangers that cold weather poses to our health and safety, especially when there's always work to be done.

Be aware of conditions

Before starting work outdoors, check the weather forecast and factor in wind chill, visibility and mobility. Monitor changing conditions throughout the day and stop if there is inclement weather.

Capitalize on the daylight hours and plan to finish before nightfall. If you are working after dark, avoid hazardous tasks and ensure you have proper lighting.

Be mindful that work takes longer in the winter. Movement is slowed by extra clothing and poor footing, and you may be less alert. It is also necessary to take more breaks to limit your exposure to the cold. Plan for extra time to complete a task, pace yourself and don't rush.

Dress for success

Choose clothing that will help regulate your temperature. It is recommended to dress in layers, with a base layer to wick moisture away from the skin, a second layer for insulation, and a top layer that is wind and moisture resistant.

Nearly half of one's body heat escapes through the head, so wear a hat and shield your face from exposure with a scarf, neck-warmer or balaclava. Your hands can be your best tools, so invest in a good pair of gloves that are warm but don't hinder your dexterity, so you can work safely.

Eyewear is often overlooked in the winter but is equally important at this time of year. The sun reflecting off the snow can cause extreme glare, and cold winds can blow snow and ice crystals into the eyes.

Prevent slips and falls

Purchase insulated, waterproof winter boots with rubber soles that offer traction on ice. You can also use slip-on cleats over top your boots for added grip.

Where possible, create designated routes around your property that are maintained regularly by clearing snow and spreading

sand and salt. Keep in mind that salt loses its effectiveness between -10 and -15 Celsius and it works better in moist snow. Sand is more appropriate for offering traction when temperatures are forecasted to stay below freezing.

Take care of you

To stay warm, the body must produce and retain the same amount of heat than it loses. Heat production relies on food intake, hydration and activity. Working in the cold requires more energy, so fuel your body with nutritious food. Warm fluids will hydrate you and help warm you up, but avoid caffeine which contributes to dehydration and heat loss.

Watch for signs of cold-related illnesses like hypothermia and frostbite. Symptoms include waxy, pale patches of skin, numbness, uncontrollable shivering, loss of coordination and disorientation.

We are Canadians, and we are proud of our producers. Thank you for your resilience.

Wishing you and your family a very safe and prosperous New Year.



G3 PROVIDES GRAIN RESCUE GEAR TO SASKCHEWAN FIRE DEPARTMENTS

Fire departments across Saskatchewan are being trained and equipped to rescue victims trapped in grain, thanks to a partnership between G3 Canada and the Canadian Agricultural Safety Association (CASA).

G3 is donating the cost of grain entrapment rescue equipment for 10 rural fire departments in the province. G3 is also a major sponsor of CASA's BeGrainSafe trailer, which is used to raise awareness of grain entrapment and to train fire fighters in the use of rescue gear.

The grain rescue equipment costs \$25,000 and G3 is funding this in addition to \$75,000 to sponsor the BeGrainSafe program.

Grain entrapment – when a person becomes caught or buried in grain – is a potentially deadly risk in agricultural operations. Rescue is difficult and requires specialized equipment including a 'cofferdam' which is a steel tube assembled around a trapped victim, and an auger which siphons the grain from around the victim. G3 is providing \$25,000 to purchase 10 sets of cofferdams and augurs for fire departments.

"Safety is our number one priority at G3 both for our employees and the communities where we live and work," says G3 CEO Don Chapman. "We have a valuable partnership with CASA and its BeGrainSafe program and this added funding will do even more to enhance safety."

Leader and District Fire Department, Humboldt Fire Department, Melville Fire and Rescue, Churchbridge Fire Rescue, Eston Volunteer Fire Department, Caronport Fire and Rescue, RM of Swift Current Fire, City of Estevan Fire Rescue Services, Beechy and District Fire Hall and Nipawan Fire Department will all receive a GSI RES-Q-TUBE and a Haul-ALL auger.



"Having a grain rescue tube and a portable auger available to fire departments trained in grain extrication greatly increases the probability of a victim surviving a grain entrapment," says Robert Gobeil CASA's Agricultural Health and Safety Specialist. "Thanks to G3, this equipment will be available in areas throughout Saskatchewan."



UPDATE: G3'ER RULES THE BOXING RING

Sébastien Bouchard continues his winning ways in the ring!

He's an operator/labourer at G3 Québec, but perhaps better known as one of the top boxers in the world. We featured Sébastien as our staff spotlight in a 2017 edition of G3 Connection and since then he's racked up more wins.

He won his latest welterweight fight December 1st in Québec City against Brazilian boxer Vitor Jones Freitas by TKO.

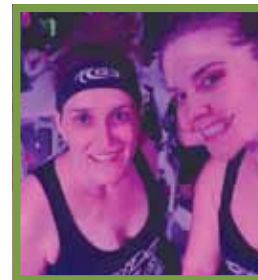
Sébastien now boasts a record of 18 wins (including 8 knockouts) and 1 loss by decision.

He is one of our own, and G3 is very proud to be one of Sébastien's key sponsors. We wish him luck 2019!

G3'ERS RIDE TO RAISE FUNDS FOR STARS

STARS air ambulance scored some new funding, with an assist from two G3 employees.

Alison Strayer and Dione Sauer were part of the Ryde the Hangar – Twin Attack event at the STARS helicopter hangar in Saskatoon. The facility was turned into a giant spin studio, where participants who gathered donation pledges rode stationary bikes for hours in support of the fundraiser.



"As a company whose customer base largely resides in rural areas, we at G3 realize things can happen in an instant, and know the importance of the services that STARS Air Ambulance provides," Sauer said.

Sauer and Strayer rode their bikes for two hours each. G3 matched all employee contributions and the pair surpassed their fundraising goal of \$2000.

The event raised a total of \$207,000 for STARS air ambulance.

G3 CONNECTION

Available free of charge to Canadian farmers

Contact G3: 204 983 0239 | Contact your local elevator: g3.ca

